

FCM Troubleshooting Mezzanine CCA Assembly

Description

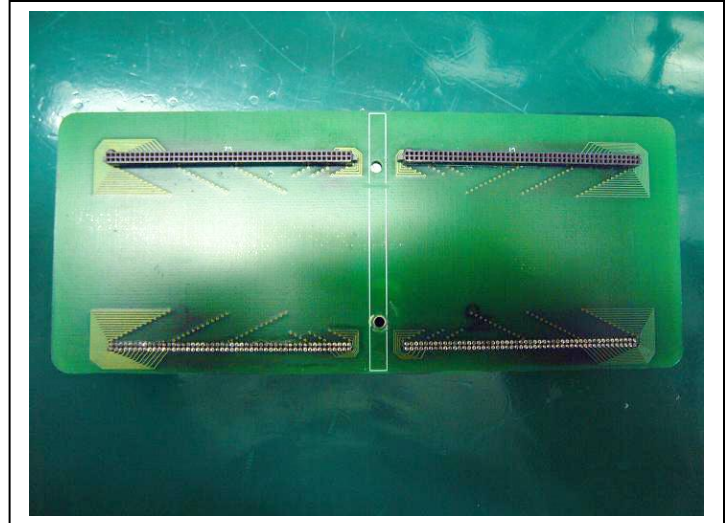
- The ATC-FMC-MEZ Mezzanine Assembly is designed to interconnect Electronic Boards within a system/chassis and give access to signals troubleshooting/debugging.

Applications:

- Extended connections
- Troubleshooting-debug
- Test of electronic cards/systems

Mechanical:

- 4 X 100 pins connectors
- 2 x PCB's



ATC-FMC-MEZ

Operating Environment:

- Operating temperature
Commercial: 0 to +70 °C
- Humidity – 5 to 90% (non-cond)
- Altitude – 0 to 10,000 feet

Ordering Information:

Part number: **ATC-FCM-MEZ**: (7028841-196)